

This camera manual library is for reference and historical purposes, all rights reserved.

This page is copyright by mike@butkus.org M. Butkus, N.J.

**This page may not be sold or distributed without the expressed
permission of the producer**

I have no connection with any camera company

If you find this manual useful, how about a donation of \$3 to: M. Butkus, 29 Lake Ave., High Bridge, NJ 08829-1701 and send your E-mail address too so I can thank you. Most other places would charge you \$7.50 for a electronic copy or \$18.00 for a hard to read Xerox copy. These donations allow me to continue to buy new manuals and maintain these pages. It'll make you feel better, won't it?

If you use Pay Pal, use the link below. Use the above address for a check, M.O. or cash. Use the E-mail of butkusmi@ptd.net for PayPal.

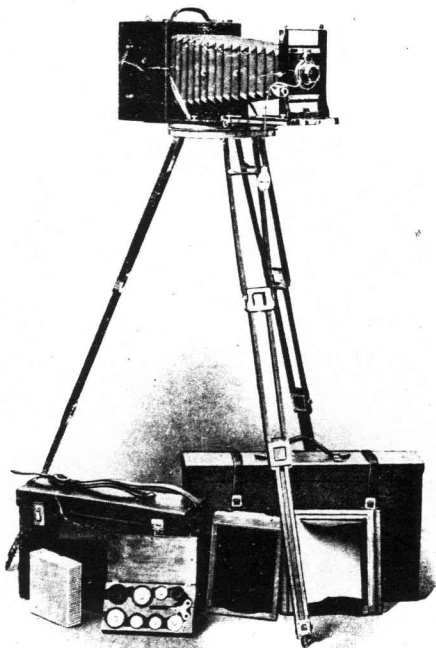


[back to my "Orphancameras" manuals /flash and light meter site](#)

Only one "donation" needed per manual, not per multiple section of a manual !

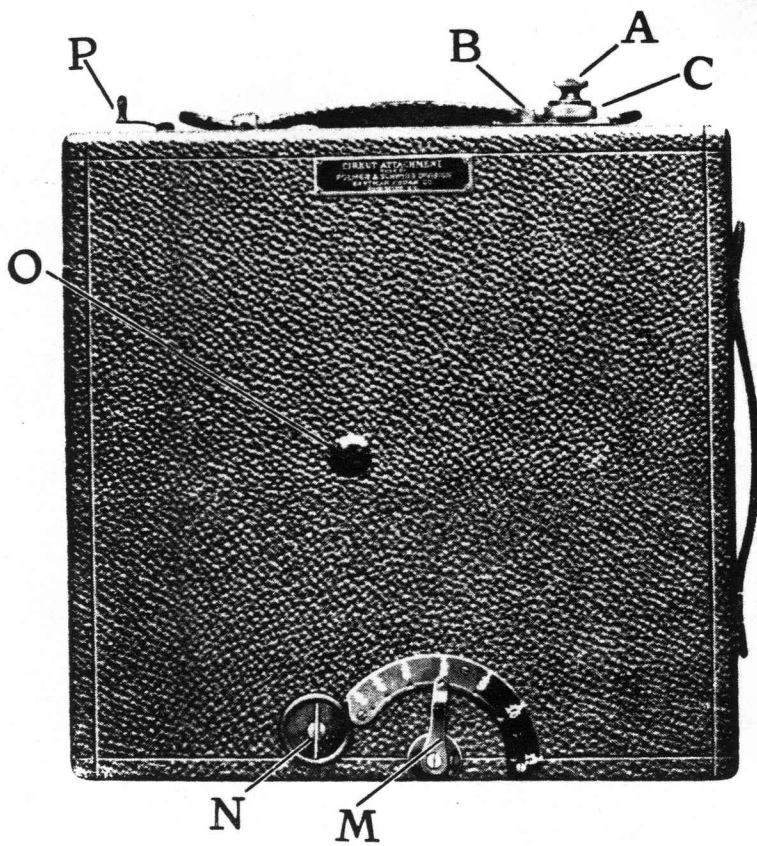
The large manuals are split only for easy download size.

THE No. 6 CIRKUT OUTFIT



EASTMAN KODAK COMPANY
Rochester, N. Y.

FOLMER & SCHWING DEPARTMENT



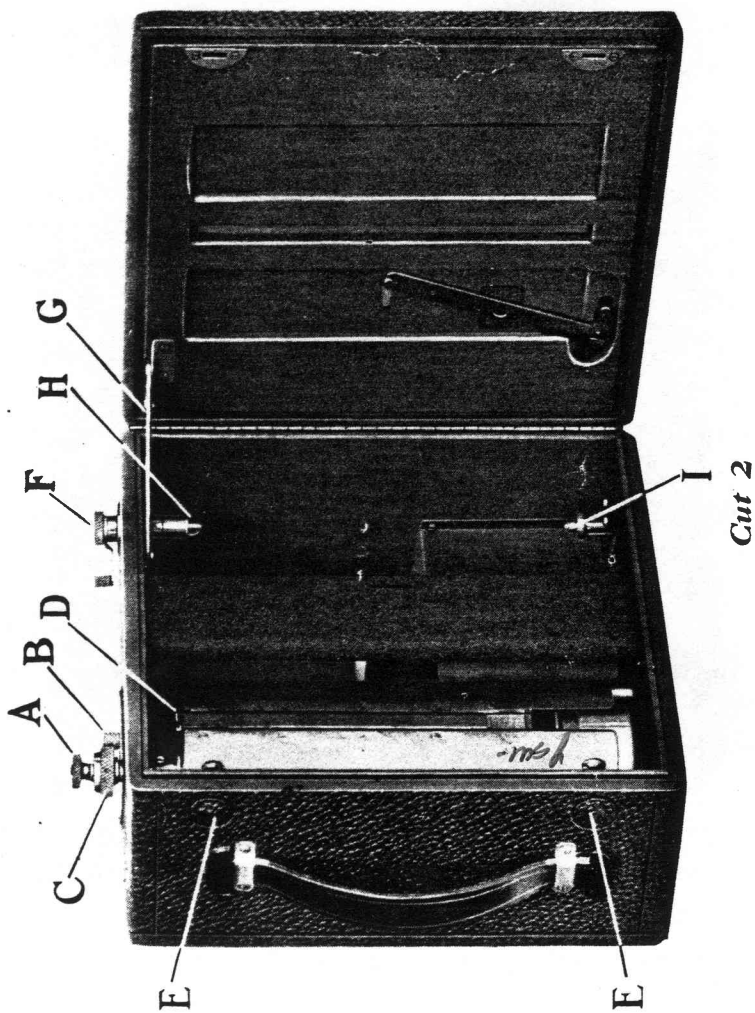
Cut 1

Instructions for Operating No. 6 Cirkut Outfit

THESSE instructions cover the operation of the No. 6 Cirkut Outfit when supplied with the Graphic Rapid Rectilinear Lens regularly listed, the complete lens having a focus of 8 inches, and the rear single lens a focus of 14 inches. When lenses other than those mentioned in this manual are supplied, the operation of the camera should be modified as indicated in the special letter accompanying the outfit, or supplementary instructions included herewith.

LOADING FILM BOX

Unloosen top milled head A, Cut 1, which disconnects motor from winding drum. Turn lower milled head C until white line comes opposite number 0. Turn small winding key B until number 104 appears at opening. Open film box by pressing two concealed buttons EE at the side, Cut 2. Raising the panel discloses the winding drum, spool centers and exposure slot. Insert film in camera by fitting small opening in end of spool over I. Pull up spring F and drop web of spring H into slot at top of



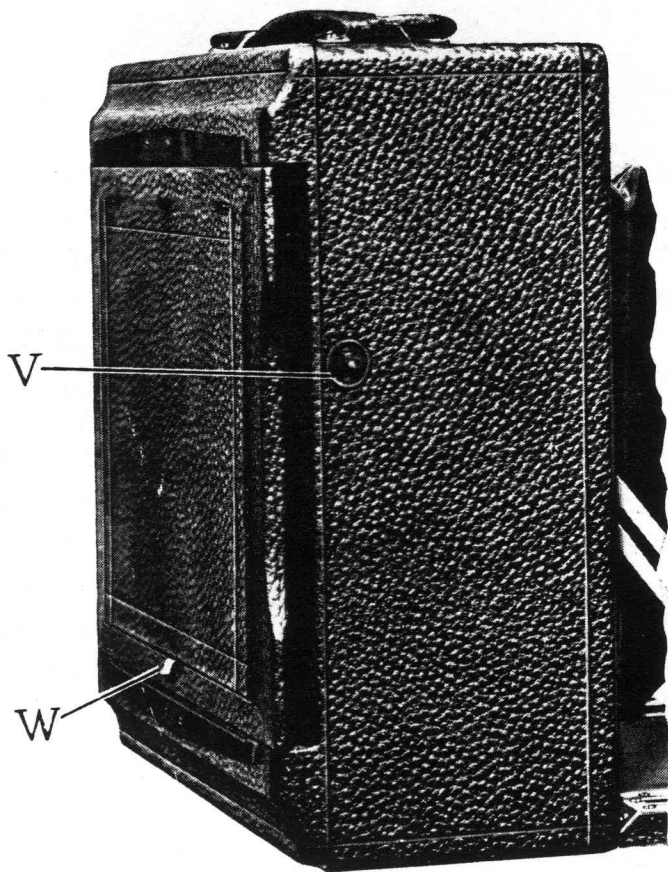
spool by releasing it. The film spool is then in correct position. Release the clamp for holding black paper on drum, by pressing upward catch D and insert the end of the black paper under the clamp, which should then be pressed firmly into position allowing projecting teeth to perforate the paper. Make sure that the catch at the upper end of the drum has engaged the clamp before closing the film box. Be sure that the paper is started perfectly true and even; otherwise an unevenness of motion will be noticed, causing blurred portions in the negative. Close the cover of film box by pressing down on side arm G. Turn lower milled head C two revolutions, which will bring the white line to zero and will cause key B to turn until 0 appears at the opening. This last operation has wound the black paper from the spool to the receiving drum, and has brought the film into position for exposure. Milled head A should now be turned down firmly. This engages the motor and receiving drum.

*To Focus With
Doublet or
Complete Lens*

scale marked D.

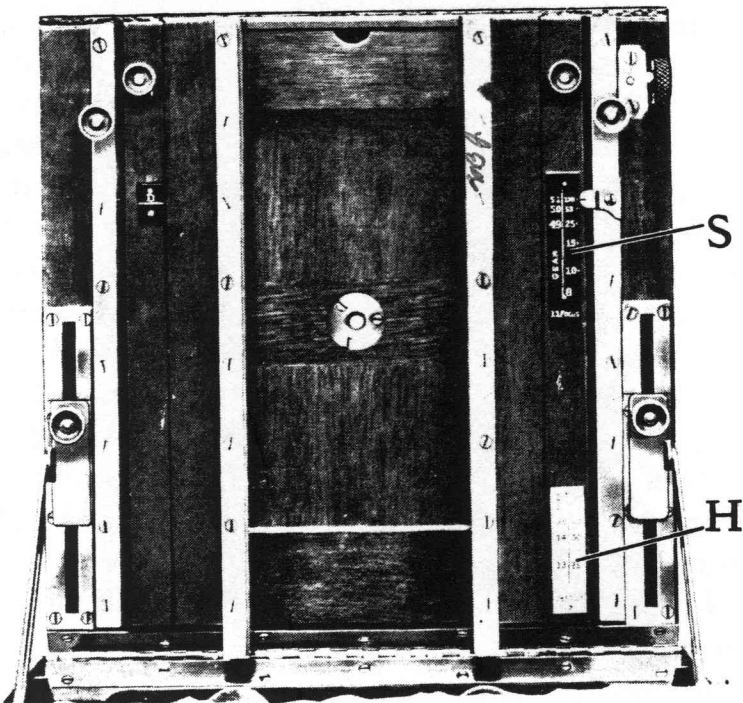
Draw out the front of the camera until small diagonal pointer on left front standard indicates white line on small
Uncover ground glass focus-

6 *Instructions for Operating*



Cut 3

ing screen by pressing down on catch W, Cut 3, and focus in the usual manner. Swing the camera from side to side to be sure that everything desired in the view is included. Use the rising and falling front to secure a well-balanced negative and include the required sky and foreground. (Hook up bellows by ring on bellows, pull where necessary to keep bellows from sagging.) Focusing should be done with the ground glass screen in a vertical position, and revolving back in such a position that a plate holder could be inserted from the top. Select the gear wheel indicated by the pointer on the scale S, Cut 4, at the right of camera bed. If the pointer falls midway between two numbers, select the gear wheel indicated by the next highest number. Screw the shaft of the gear wheel selected firmly into the round opening K, Cut 5, at the bottom of film box. Wind the motor by inserting key in square opening L at bottom of film box. Be sure that the motor is wound up sufficiently tight to carry the camera the full distance. Frequently the slowing up of the motor is due to its having been insufficiently wound. Remove the ground glass back from the camera by pressing forward small catch V, Cut 3, at right of camera. Turn revolving back to the right so that the top edge

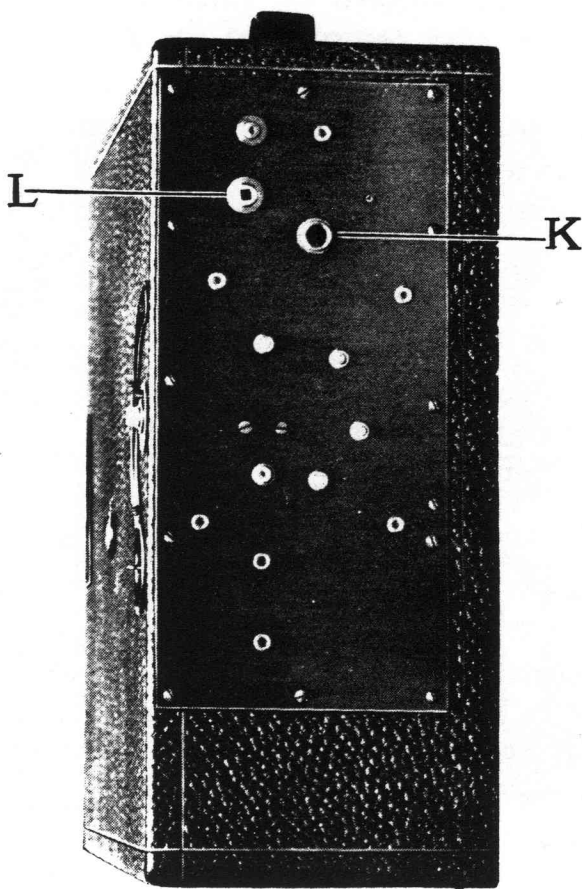


Cut 4

falls on white line on back frame of camera. Cut 6. Press upward on catch U which will permit the easy removal of the ground glass back.

Place the film box in position by adjusting it to the back of camera so that the top carrying the winding key and milled head, comes diagonally across the upper right hand corner of the camera box. Cut 7. Turn the film box to the left, being sure it is perfectly engaged, without adjusting catch U. When the top of the film box is in line with the top of the camera it will be locked firmly into position by catch V. Turn the camera until it points to the extreme left of the subject to be photographed, and slide it forward on the tripod top until the gear wheel engages the rack on the tripod top.

The scale and pointer M, Cut 1, at the back of the film box indicates the speeds from 1-2 to 1-12 of a second. Estimate the exposure required and set the pointer on speed desired. See that the lens shutter is open and the diaphragm set at the required opening. Start camera by turning depressed key N on back of film box. This opens the exposure slot and starts the motor simultaneously. After the camera has revolved a sufficient distance to include the required



Cut 5

negative, give the key another turn which closes the exposure slot and stops the motor. Press concealed button O firmly, which perforates the film at the termination of exposure showing where to cut the film apart, when more than one negative is made on the same roll of film.

*To Focus With
Rear Single Lens
(14-inch)*

Draw front of camera out to **edge of bed**. Unscrew front cell from lens and remove it from shutter. Focus on the ground glass panel as previously indicated, and select gear wheel shown on scale H at rear of camera bed.

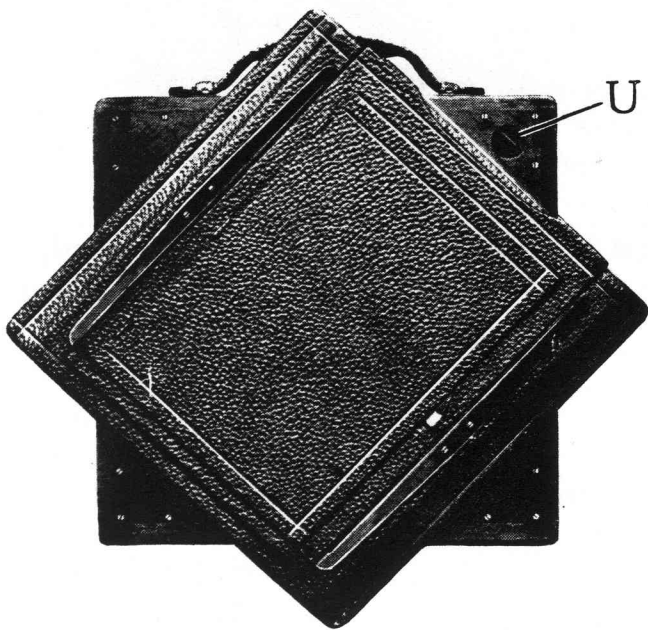
*To Remove
Film*

Loosen milled head A on top of film box, and turn small crank P, Cut 1, at top of film box in direction indicated by arrow. This will rewind the film from the receiving drum and also bring the black paper into position, when the film may be removed in daylight.

*Special
Instructions*

For use of the series II Turner-Reich Triple Convertible Lens on the No. 6 Cirkut Outfit, the following instructions should be used:

To use the doublet, which is 7 inches equivalent focus, draw front of camera out until



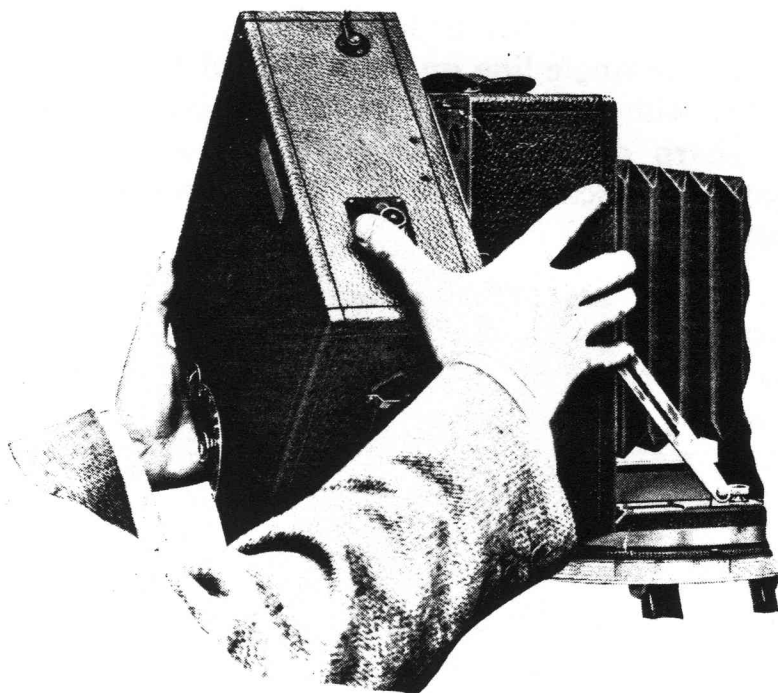
Cut 6

pointer on left side of lens support base stands opposite single line on scale marked D. Then focus with rack and pinion until object desired is sharp on screen and use gear indicated by pointer on scale marked 7, indicating the correct scale for the 7 inch doublet.

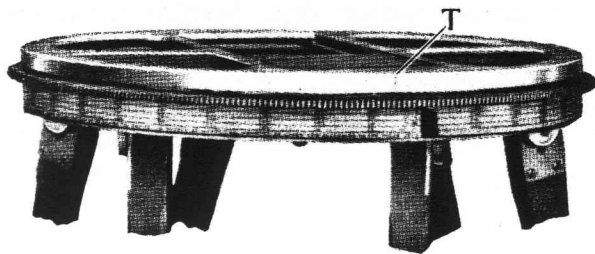
To use rear single lens, which is 12 inches equivalent focus, remove front lens, draw front of camera out as far as it will go until it strikes stop at end of track on front edge of camera bed, clamp and rack out. Then focus in the usual manner with rack and pinion until object desired is in sharp focus, when gear to be used will be indicated by pointer on scale marked 12, indicating the equivalent focus of back single lens, 12 inches.

To use front single lens, remove rear lens and allow front to remain in its normal position in front of mount, draw front of camera out the same as when using rear single lens, until it strikes stop on front edge of bed. Then use rack and pinion to focus, using gear as indicated by pointer on scale marked 18, indicating the focal length of front lens, which is 18 inches.

NOTE: By using front single lens in the front of mount, instead of rear, it requires less draw



Cut 7



Cut 8

of bellows and gives identically the same magnification as if used in rear of mount, and allows camera to balance better on tripod head.

**To Remove
Film Box From
Camera** Press forward small catch V,
Cut 3, at right of camera box,
and turn film box to the right
until the top edge falls on
white line diagonally across the upper right hand
corner of camera, when the film box may be
readily removed without moving catch U.

**To Determine
Amount of Film
Required** The scale encircling the tri-
pod top indicates the amount
of film required in inches for
the different number of de-
grees that the view will embrace. When focus-
ing the camera, the instrument should be pointed
to the extreme left of the subject to be photo-
graphed and the tab—which moves the scale on
tripod top—drawn around until it comes directly
under the center of the back of camera as indi-
cated by the back line T, Cut 8, on the revolving
metal platform. The camera should then be
pointed to the extreme right of the subject, per-
mitting the sliding scale to remain in position.
The small black line will then indicate the num-
ber of degrees the picture would include, also

the length of film in inches with either the 8 or 14-inch lens.

To determine the amount of film used by the indicator on top of Film Box, add to the number appearing in the small opening, the number indicated by the white line on milled head C. This will give the exact amount of film used for any required view.

BEFORE MAKING EXPOSURE

1. Level camera.
2. Focus.
3. Select proper gear.
4. Set governor for speed.
5. Set lens diaphragm.
6. Wind motor.

Then

Make exposure.

Puncture film.

Note amount of film used, and amount remaining.

Caution: Always see that starting key N is in an "off" position before opening film box, even though the motor has run down. If the motor is permitted to run down, and the back panel of the film box opened without first turning the key in an "off" position, the lever controlling the exposure slot will become bent when the back panel is closed.

Oil the bearings occasionally with a few drops of good sewing-machine or clock oil. Very little oil is sufficient.

FILM

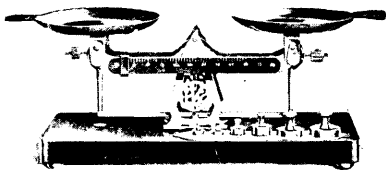
When ordering Film for this instrument be sure to specify for No. 6 Cirkut Outfit, as film for No. 10 and No. 16 Cirkut Camera cannot be used with the No. 6 Cirkut Outfit. Order listed sizes only, as films of lengths not regularly listed are spooled to order, which always involves a delay in making shipment. Films of lengths other than those listed will be billed at the next higher regularly listed price.

EASTMAN KODAK COMPANY

Rochester, N. Y.

FOLMER & SCHWING DEPARTMENT

The EASTMAN STUDIO SCALE (avoirdupois) was built with the idea of providing the professional photographer with a convenient, as well as an accurate, means of weighing chemicals. The small grain weights, so easily misplaced or lost, are replaced by a sliding weight on a beam, while carefully turned and tested larger weights fit into depressions in the base. It is convenient to use—it weighs accurately, and its hardened steel bearings make it exceptionally durable.



The Price, \$4.50

EASTMAN KODAK COMPANY,
ROCHESTER, N. Y.

All Dealers'.

The final and perfecting step in re-
fining coal tar developers produces

MONOMETHYL
PARAMIDOPHENOL
SULPHATE

Its pronounceable name is

ELON

1976

Reprinted by
PHOTOGRAPHIC MEMORABILIA
P.O. Box 351
Lexington, Mass. 02173

Send for a complete list
of publications